



Flat Jack- (Load Assisted Spring Return)

Maximum Operating working Pressure 10,000 psi/700 Bar

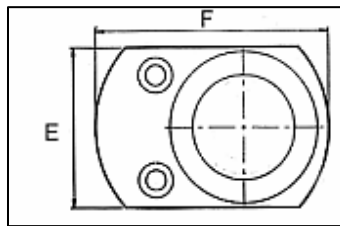
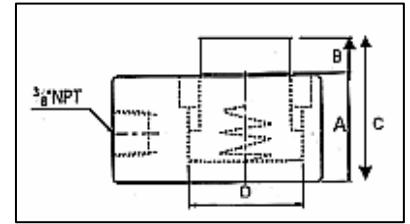
Design pressure 700 bars.

Alloy steel hydraulic cylinder - hardened & tampered, hard chrome plated & honed to fine finish.

Alloy steel piston – hardened & tampered, hard chrome plated, ground.

End Connection 3/8" NPT female (coupler half female optional extra)

Specified shut height & stroke controlled within +/- 3mm



Specification

S No	Jack Model	Capacity (Tones)	Shut Height (A)	Stroke (B)	Extended Height	Ram Dia (D)	Base (E & F)	Oil Capacity (cc)	Complete set Part no	Suitable Pump
1	MLHJ-05C	5	35	8	43	25	60X45	6	MLHJ-05P	MHHP-91
2	MLHJ-10C	10	45	12	57	35	80X60	19	MLHJ-10P	MHHP-91
3	MLHJ-20C	20	55	12	67	50	100X80	37	MLHJ-20P	MHHP-91
4	MLHJ-30C	30	60	12	72	63	115X95	53	MLHJ-30P	MHHP-91
5	MLHJ-50C	50	65	16	81	70	140X115	102	MLHJ-50P	MHHP-91
6	MLHJ-75C	75	80	16	96	85	165X140	152	MLHJ-75P	MHHP-91
7	MLHJ-100C	100	85	16	101	100	180X155	212	MLHJ-100P	MHHP-91
8	MLHJ-150C	150	100	16	116	120	220X195	322	MLHJ-150P	MHHP-91
9	MLHJ-200C	200	115	16	131	140	265X230	454	MLHJ-200P	MHHP-91

HYDRAULIC HAND PUMP

Hydraulic hand hump with heavy-duty construction with hardened and ground piston, renewable suction, delivery relief and release valve parts.

Usable displacement/stroke at rated pressure 2.8cc.

Integral reservoir of adequate oil capacity.

Automatic safety valve to cut the pressure at set pressure.

Provision to connect pressure gauge, if required.

Hand Pump Specification

MHHP-91- Single speed, discharge/stroke 2.8cc, total reservoir capacity 1.8 liters, usable capacity 1 liters approx.

MHHP-151-Single speed, stroke 2.8cc, total reservoir capacity 2.2 liters, usable capacity 1.8 liters approx.

MHHP-202-Two stage, output/stroke up to 30 bar 53 cc, output/stroke above 30 bar 2.8cc, total reservoir capacity 3 liter, usable capacity 2 liter approx.

MHHP-402-Two stage, output/stroke up to 30 bar 53 cc, output/stroke above 30 bar 2.8cc, total reservoir capacity 5 liter, usable capacity 3.5 liter approx.

MHHP-502-Two stage, output/stroke up to 30 bar 53 cc, output/stroke above 30 bar 2.8cc, total reservoir capacity 8 liter, usable capacity 5 liter approx.

MHHP-1002- Two stage, output/stroke up to 30 bar 53 cc, output/stroke above 30 bar 2.8cc, total reservoir capacity 13 liter, usable capacity 10.0 liter approx.



HYDRAULIC HOSE

Industrial multilayer hose with 700-bar Maximum Working Pressure with 3/8" NPT Male connection at both end along with spring guards. Burst pressure tested to 1500 bars minimum.

PRESSURE GAUGE (OPTIONAL)

Pressure Gauge 0-980 Bar glycerine filled with stand pipe with end fittings

All the hoses & quick coupler are of the European origin.