



Screwed Ram- With Lock Nut (Load Assisted –Tension Spring Return)

Maximum Operating working Pressure 10,000 psi/700 Bar

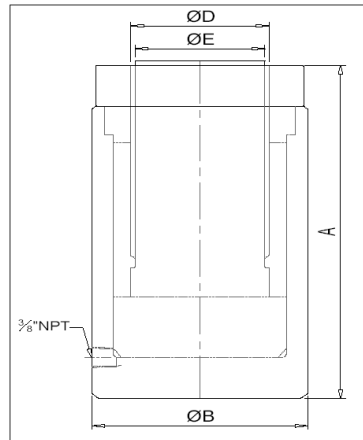
Design pressure 700 bars.

Alloy steel hydraulic cylinder - hardened & tempered, hard chrome plated & honed to fine finish.

Alloy steel piston – hardened & tempered, hard chrome plated, ground.

End Connection 3/8" NPT female (coupler half female optional extra)

Specified shut height & stroke controlled within +/- 3mm



Specification

Model	Ram Capacity (Tons)	Stroke (mm)	Closed Height (mm) A	Extended Height (mm)	Cylinder OD (mm) B	Ram Dia (mm) D	Saddle Dia (mm) E	Oil Capacity(cc)	Weight (Kg Approx)	Suitable Pump	Complete Set
MSRJ-10/15C	10	150	250	400	60	40	35	239	5	MHHP-91	MSRJ-10/15P
MSRJ-15/15C	15	150	260	410	70	45	40	357	7	MHHP-91	MSRJ-15/15P
MSRJ-20/15C	20	150	270	420	80	50	45	468	9	MHHP-91	MSRJ-20/15P
MSRJ-25/15C	25	150	285	435	90	55	55	578	13	MHHP-91	MSRJ-25/15P
MSRJ-30/15C	30	150	295	445	100	60	58	663	17	MHHP-151	MSRJ-30/15P
MSRJ-50/15C	50	150	310	460	130	80	74	1178	30	MHHP-402	MSRJ-50/15P
MSRJ-75/15C	75	150	320	470	155	95	94	1697	44	MHHP-402	MSRJ-75/15P
MSRJ-100/15C	100	150	350	500	175	110	104	2309	60	MHHP-402	MSRJ-100/15P
MSRJ-150/15C	150	150	365	515	220	140	134	3405	103	MHHP-502	MSRJ-150/15P
MSRJ-200/15C	200	150	380	530	255	160	153	4713	142	MHHP-502	MSRJ-200/15P
MSRJ-250/15C	250	150	395	545	280	180	173	5702	180	MHHP-1002	MSRJ-250/15P
MSRJ-300/15C	300	150	410	560	310	200	193	6786	232	MHHP-1002	MSRJ-300/15P
MSRJ-400/15C	400	150	450	600	350	220	213	8589	324	MHHP-1002	MSRJ-400/15P
MSRJ-500/15C	500	150	475	625	385	250	243	10604	418	MHHP-2002	MSRJ-500/15P
MSRJ-600/15C	600	150	500	650	420	275	268	12830	524	MHHP-2002	MSRJ-600/15P
MSRJ-800/15C	800	150	535	685	485	310	303	17012	747	MHAP-03/25	MSRJ-800/15P
MSRJ-1000/15C	1000	150	570	720	540	350	342	21279	992	MHAP-03/25	MSRJ-1000/15P

HYDRAULIC HAND PUMP

Hydraulic hand hump with heavy-duty construction with hardened and ground piston, renewable suction, delivery relief and release valve parts.

Usable displacement/stroke at rated pressure 2.8cc.

Integral reservoir of adequate oil capacity.

Automatic safety valve to cut the pressure at set pressure.

Provision to connect pressure gauge, if required.

Hand Pump Specification

MHHP-91- Single speed, discharge/stroke 2.8cc, total reservoir capacity 1.8 liters, usable capacity 1 liters approx.

MHHP-151-Single speed, stroke 2.8cc, total reservoir capacity 2.2 liters, usable capacity 1.8 liters approx.

MHHP-202-Two stage, output/stroke up to 30 bar 53 cc, output/stroke above 30 bar 2.8cc, total reservoir capacity 3 liter, usable capacity 2 liter approx.

MHHP-402-Two stage, output/stroke up to 30 bar 53 cc, output/stroke above 30 bar 2.8cc, total reservoir capacity 5 liter, usable capacity 3.5 liter approx.

MHHP-502-Two stage, output/stroke up to 30 bar 53 cc, output/stroke above 30 bar 2.8cc, total reservoir capacity 8 liter, usable capacity 5 liter approx.

MHHP-1002- Two stage, output/stroke up to 30 bar 53 cc, output/stroke above 30 bar 2.8cc, total reservoir capacity 13 liter, usable capacity 10.0 liter approx.



MHAP-03/25- Mekaster Hydraulic power Pack Unit 3HPx25Liter Oil Tank Capacity, out door duty portable type
 Flow 1.5l/min, Working Pressure 700 Bar Consisting of Radial Piston pump with bell housing directly driven by 3 Hp/3 Phase Electric Motor along with Starter Hand Lever operated directional control valve, pressure relief valve, Pressure Gauge & Coupler half.

HYDRAULIC HOSE

Industrial multilayer hose with 700-bar Maximum Working Pressure with 3/8" NPT Male connection at both end along with spring guards. Burst pressure tested to 1500 bars minimum.

PRESSURE GAUGE (OPTIONAL)

Pressure Gauge 0-980 Bar glycerine filled with stand pipe with end fittings

All the hoses & quick coupler are of the European origin.